

This document contains instructions for installing both the Graphics and Navigation FAST packs.

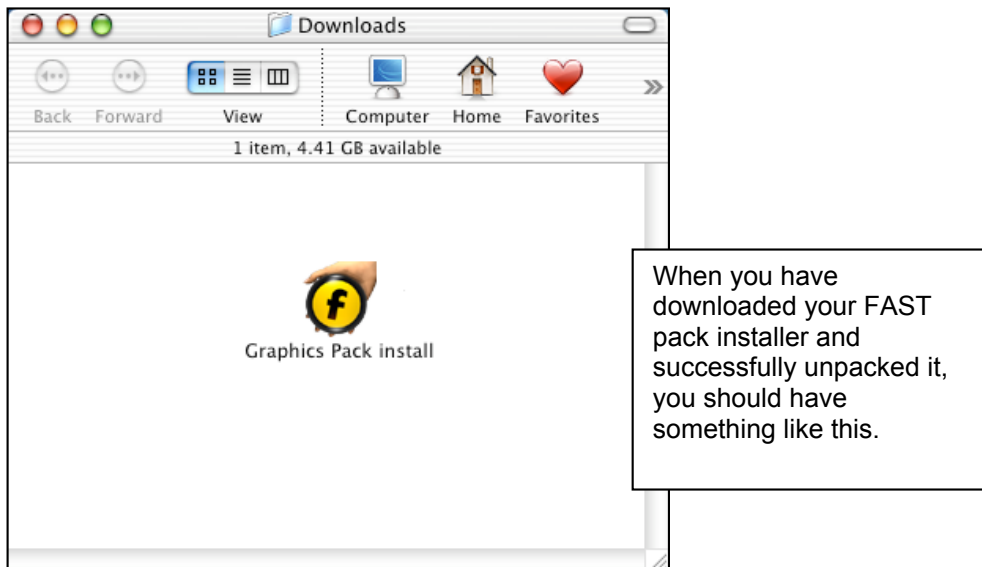
Preliminary information.

The installation instructions for the Graphics and Navigation packs are identical. You may see screenshots in this document that are taken from a different pack to the one you are installing, but the installation procedure is identical nonetheless.

These FAST packs are only for use with Freeway Pro 3.5 or Freeway Express 3.5. They will not work with any previous version of Freeway, including Freeway 3.5.6. These FAST packs installers will only install items if Freeway Pro 3.5 or Freeway Express 3.5 is already installed.

Running the Installer.

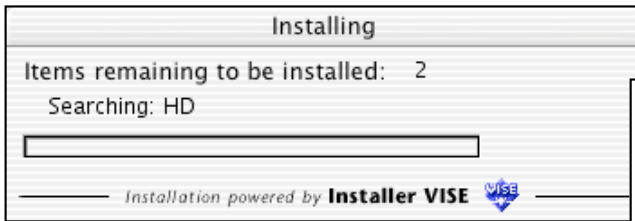
After you have downloaded your FAST pack installer, make sure your browser has successfully decoded it from its original format. If the file you have downloaded has a “.bin” or “.php” suffix, then your browser hasn’t decoded the file. Open “Stuffit Expander” on your machine and drop the .bin or .php file on it to decode it. Once you have done this, you should be left with the FAST pack installer itself, which will be called “Graphics Pack install” or “Navigation Pack install”.



You are now ready to begin the installation procedure.

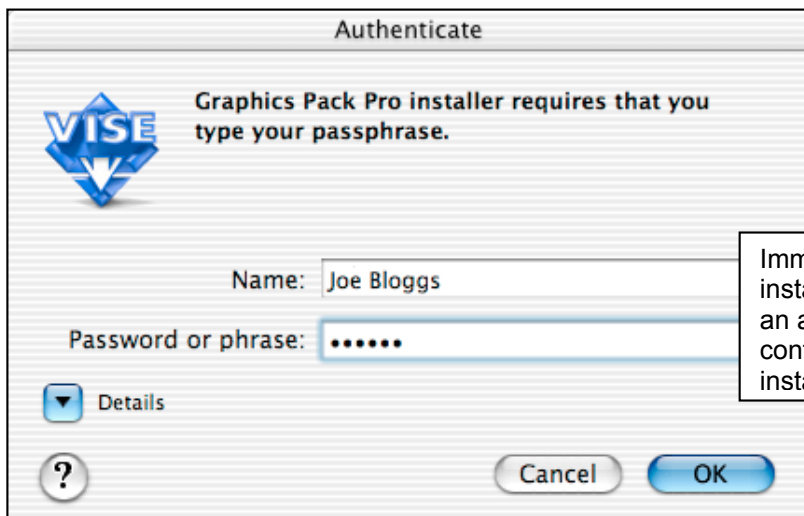
Double-click on the installer to begin the installation of your FAST pack.

The FAST pack installers consist of two parts. The first part looks for an installation of Freeway Pro 3.5 or Freeway Express 3.5. If one of these is found, then the second part of the installer launches. If Pro or Express are not found, then the FAST installation will fail.



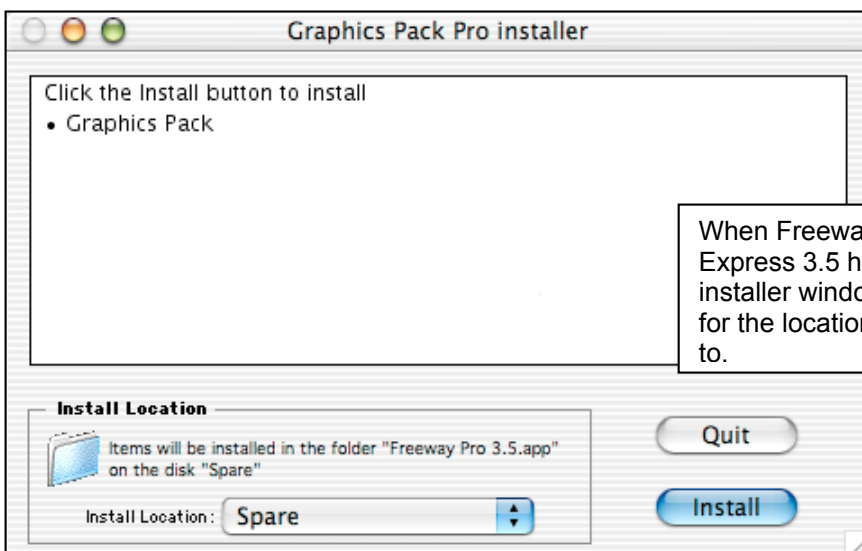
The first part of the FAST install will search your machine for an installation of Freeway Pro 3.5 or Freeway Express 3.5.

If the search for Freeway Pro 3.5 or Freeway Express 3.5 is successful then a sub-installer is launched and you are asked for an administrator username and password.



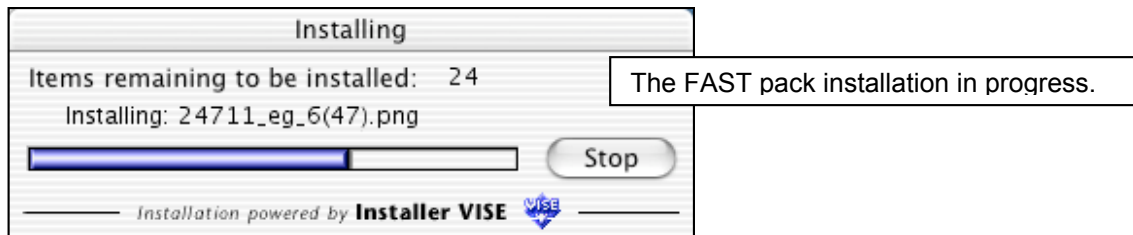
Immediately after the first part of the installation process, you will be asked for an admin username and password to continue with the second part of the installation process.

Once you have entered your username and password, you will be asked to choose which installation of Freeway Pro 3.5 or Freeway Express 3.5 you want to install a FAST pack for. Most users will have only one copy of Freeway Pro or Freeway Express.



When Freeway Pro 3.5 or Freeway Express 3.5 has been found, this sub-installer window will appear asking you for the location to install the FAST pack to.

When you have chosen the location of your Freeway Pro 3.5 or Freeway Express 3.5, the installation will proceed, installing the FAST packs, PDF documentation and Apple Help files.



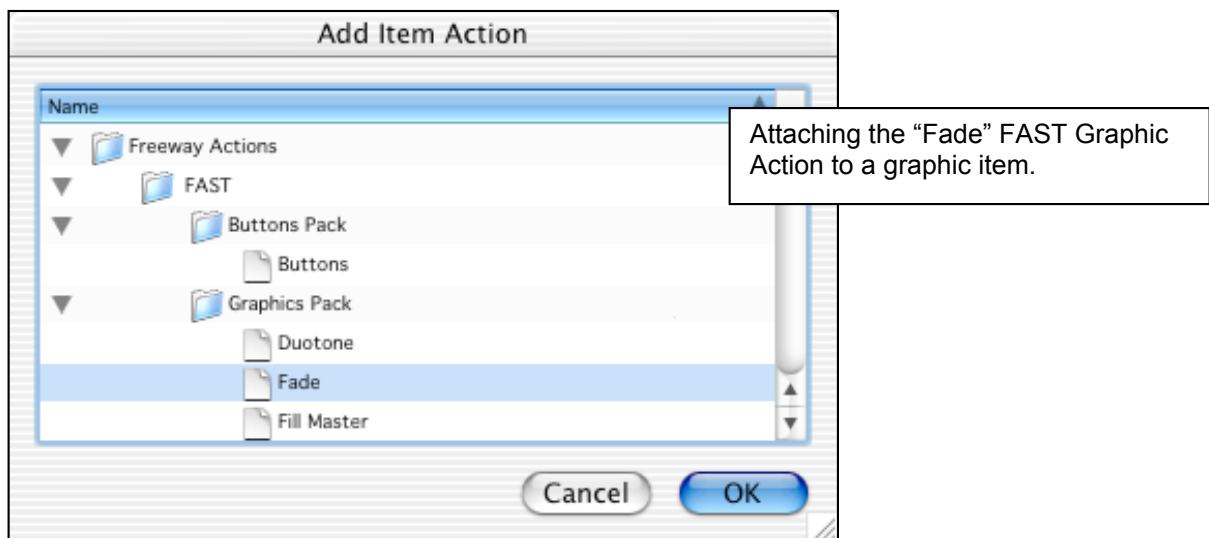
Your FAST pack should now be installed.

Entering your FAST Keys.

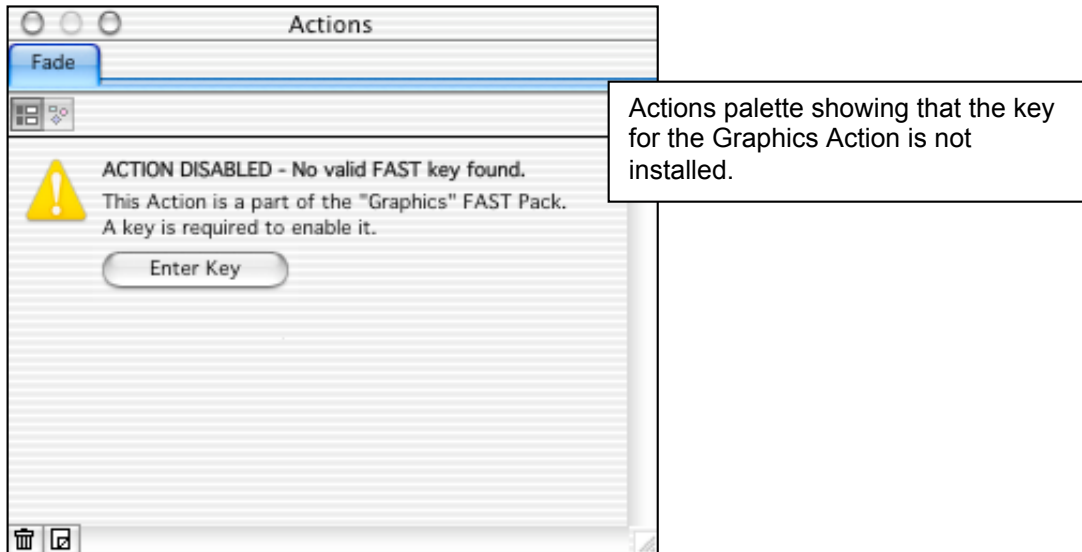
After you have installed your FAST pack, you will have to enable it using the FAST keys, which you will have received from Softpress via email.

Graphic Pack Keys

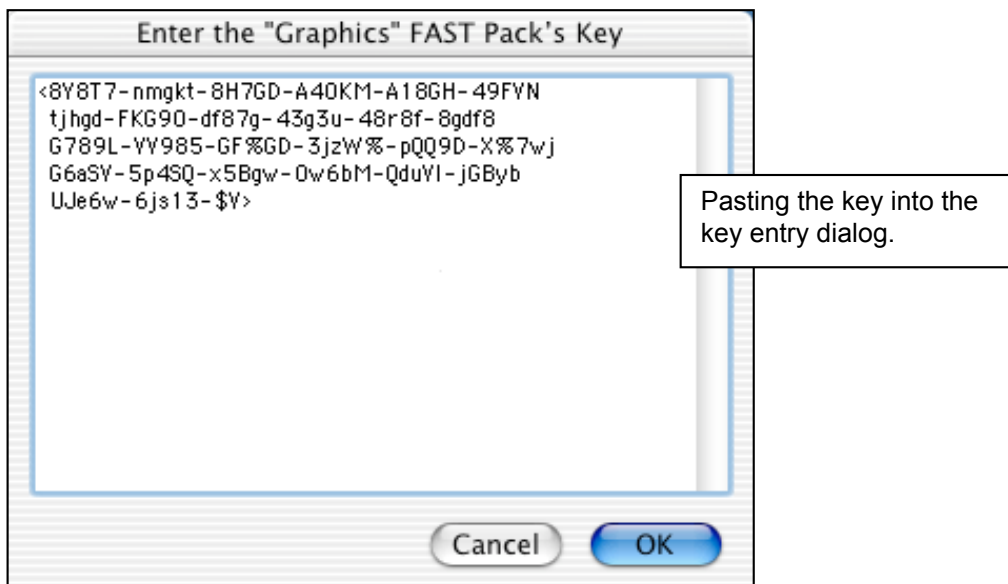
To enable the Graphic FAST pack key, you need to draw a graphic box on your page, then via the Actions palette, attach any Graphics pack Action to the graphic. To attach an Action to the graphic, click on the "Add Action" icon on the Action palette to bring up the "Add Item Action" dialog, and then select any one of the Graphics Pack actions to the graphic.



When you have successfully attached a Graphic Action to a graphic, the Actions palette will change, telling you that there is no valid FAST key installed for that Action.



Click the "Enter Key" button on the Actions palette to bring up the key entry dialog. The simply copy and paste the key from your email into the dialog.



Navigation Pack keys

The installation of the Navigation pack key is almost identical to the installation of the Graphic Pack key, except you will need to select a Navigation Pack action such as “Menu bar” Action to enter the keys.

That’s it! You should now be able to use your FAST Action packs.